



TROY PRODUCTS

INSTALLATION INSTRUCTIONS

May 10, 2018
Revision 0

A division of Troy Sheet Metal Works, Inc.
1024 South Vail Avenue, Montebello, CA 90640
www.troyproducts.com 800 700-8769

Part No: TP-EXP18-MAX-R
Description: Rear partition

Vehicle: Ford Expedition
Model year: 2018



I.) Install foot brackets:

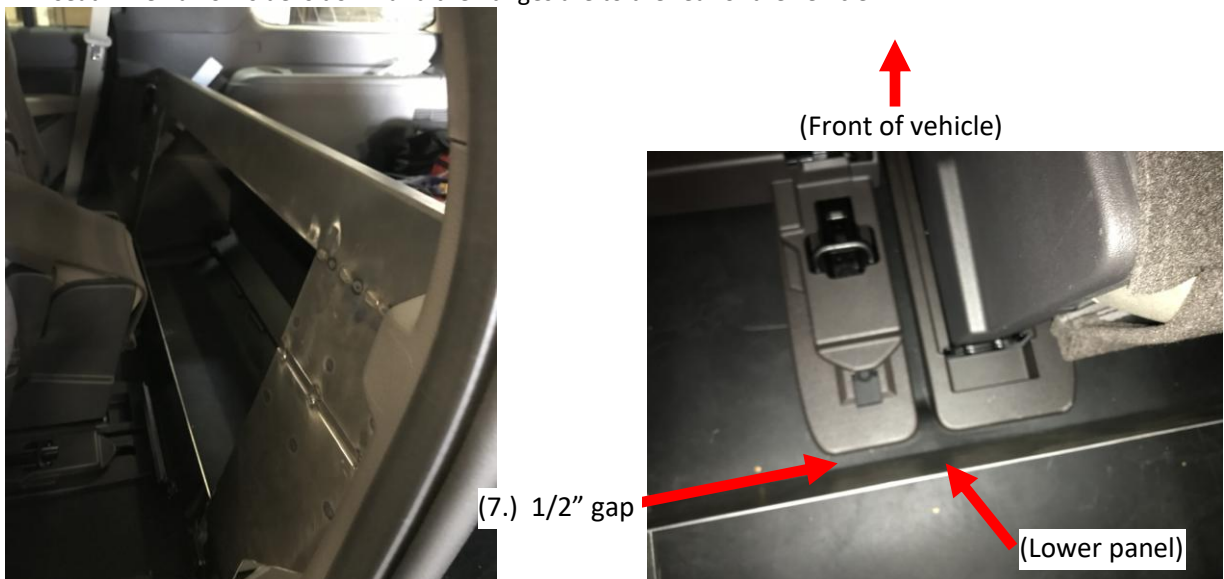
- 1.) Remove third row seats if vehicle is so equipped.
- 2.) Adjust rear seats to their full forward position.
- 3.) Loosen (2) bolts in vehicle floor behind rear seats.



- 4.) Slide foot brackets under metal floor bracket and plastic floor panel. Do not tighten at this time.

II.) Install partition panels:

- 5.) Carefully slide the lower partition panel through the driver side rear door into the vehicle behind the rear seat. The narrow side is down and the flanges are to the rear of the vehicle.

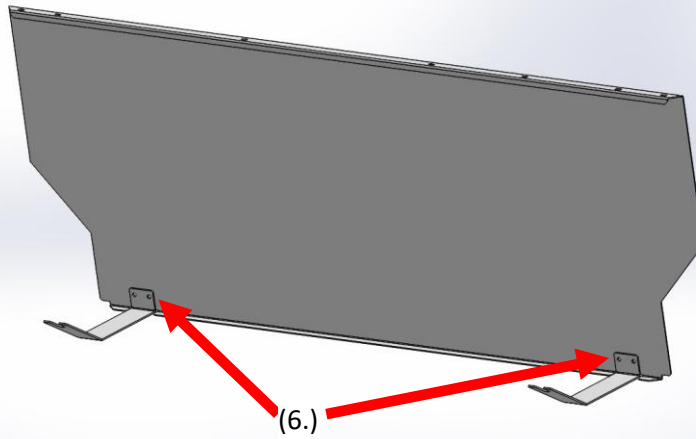


- 6.) Attach the foot brackets to the lower panel using (4) provided $\frac{1}{4}$ -20 x $\frac{5}{8}$ " bolts, washers and nuts. Do not tighten at this time.

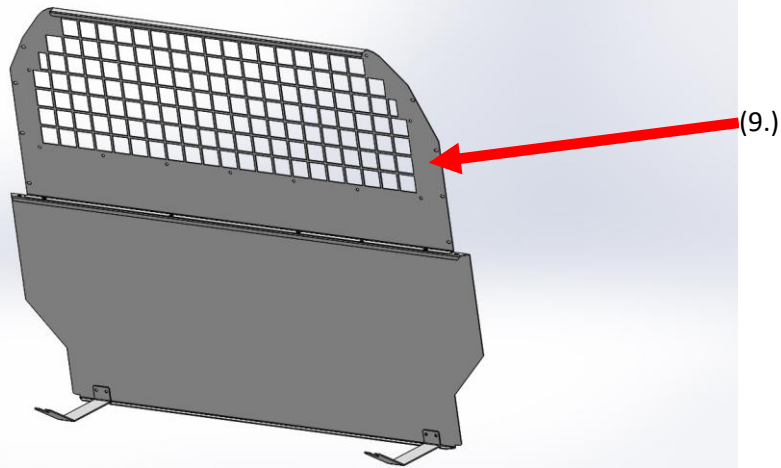
TP-EXP18-R

(Driver side)

(Passenger side)



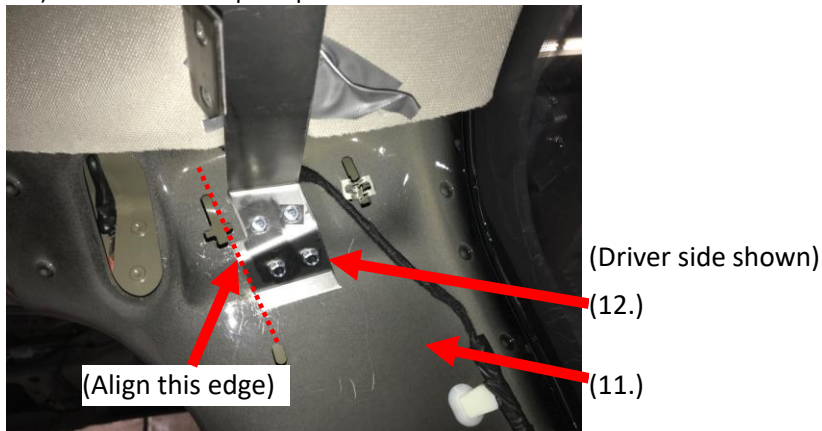
- 7.) Center the lower panel in the vehicle (side-to-side) and adjust the lower panel (front-to-back) so that there is a 1/2" gap between the lower panel and the plastic trim of the vehicle seat rails.
- 8.) Securely tighten the (2) vehicle floor bolts to manufacturer specifications and tighten the (4) 1/4-20 x 5/8" bolts used to attach the foot brackets to the lower panel.
- 9.) Install the upper partition panel on top of lower panel. The flange is toward the rear of the vehicle.



- 10.) Attach the upper panel to the lower panel using (5) provided 1/4-20 x 5/8" bolts, washers and nuts. Do not tighten at this time.

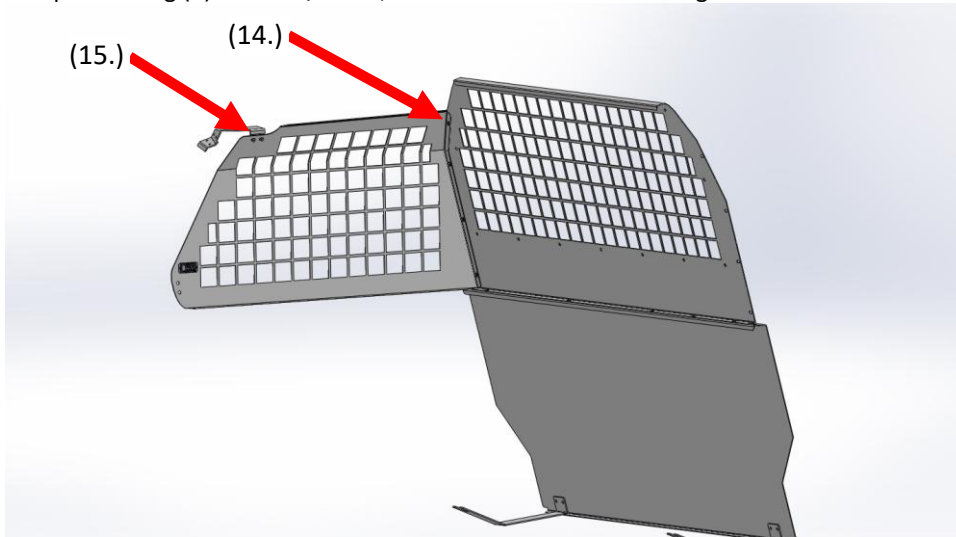
III.) Install side panels:

- 11.) Remove the "D" pillar plastic covers from the vehicle.



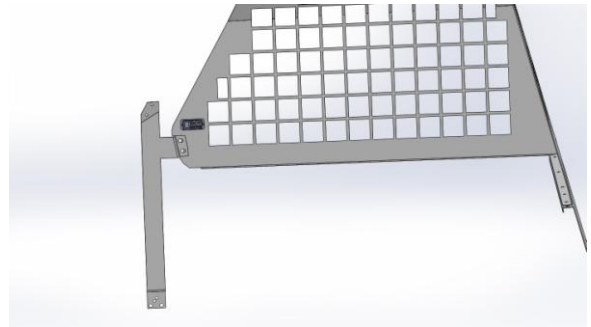
- 12.) Install upper bracket to "D" pillar. Align upper bracket edge to slot in "D" pillar as shown in photo and secure using (4) provided #10 x 5/8" self-tapping screws.
- 13.) Re-install "D" pillar cover.

14.) Install side panel and fasten to upper panel using (4) ¼-20 x 5/8 bolts, washers and nuts and to bottom panel using (1) ¼-20 x 5/8 bolt, washers and nuts. Do not tighten at this time.



15.) Connect side panel to upper “D” pillar bracket using (2) ¼-20 washers and nuts. Do not tighten at this time.

16.) Remove accessory tie-down ring.



17.) Install lower bracket using the OEM bolt. Adjust lower bracket so that it is vertical.

18.) Align holes with side panel threaded studs and attach using (2) ¼-20 washers and nuts. Do not tighten at this time.



19.) Drill (2) 5/32” holes using the bracket holes as a guide. Drill through the plastic trim and through the vehicle “D” pillar sheet metal. Be sure the hole is drilled perpendicular with the “D” pillar surface.

20.) Remove the lower bracket and following the previously drilled 5/32” holes and using a forstner bit or similar flat bottom drill, drill (2) 9/16” holes through both layers of the “D” pillar plastic trim so that the sheet metal of the “D” pillar is exposed.

21.) Insert (2) .50 OD x .75” long nylon spacers into the previously drilled holes.

22.) Re-install lower bracket, attach to the side panel with washers and nuts and fasten lower bracket to “D” pillar using (2) provided #10 x 1.5” self-tapping screws inserted through the (2) spacers.

- 23.) Repeat steps #12 - #22 on the opposite side of the vehicle.
- 24.) Securely tighten all fasteners.

Your installation is now complete. If you have any questions or suggestions for adding additional instructions, please call **Customer Service at (800) 700-8769.**

