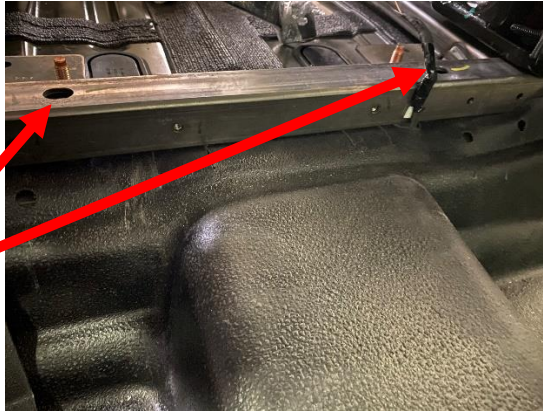
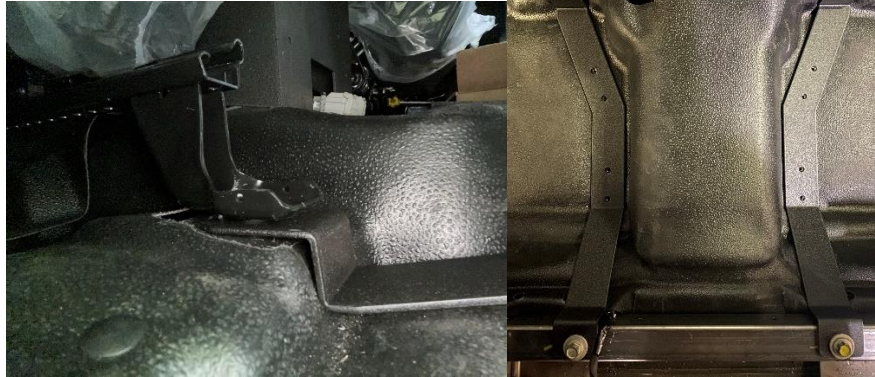


- 3.) Remove indicated seat mounting screws from second row subframe using 13mm socket. Tuck rubber mat under subframe as shown.

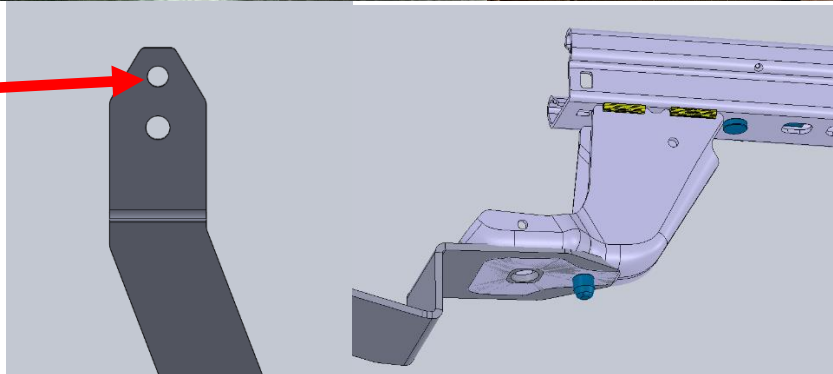
REMOVE THESE SCREWS



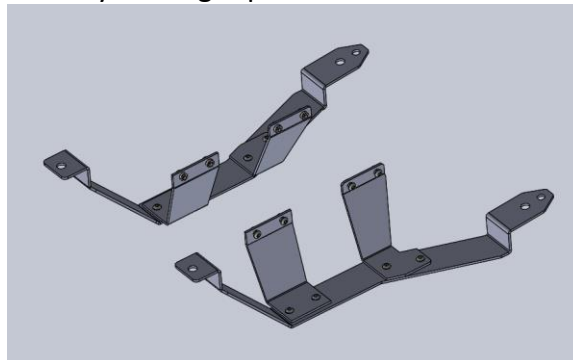
- 4.) Align rear mounts of feet with square tube at locations where screws were just removed. If a second row seat is present, removing the front seats will make installation easier, but it is not necessary. Rock front seats forward to slide mounting feet (#pf, #df) under seat mounts, making sure to align seat pins with clearance holes in feet.



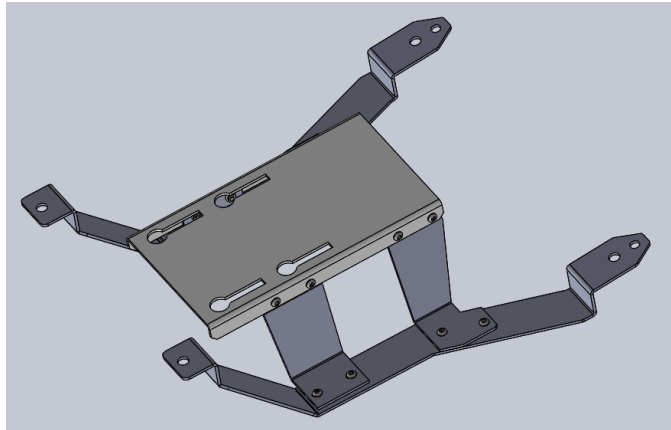
ALIGNMENT
PIN HOLE



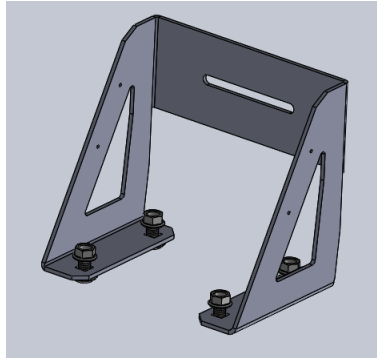
- 5.) Re-insert subframe screws and front seat mount screws, leaving them loose.
6.) Mount rear brackets (#b) and driver/passenger front brackets (#pb2, #db2) as shown, using a 5/32 allen key and eight provided 1/4-20x0.5 screws, leaving screws loose.



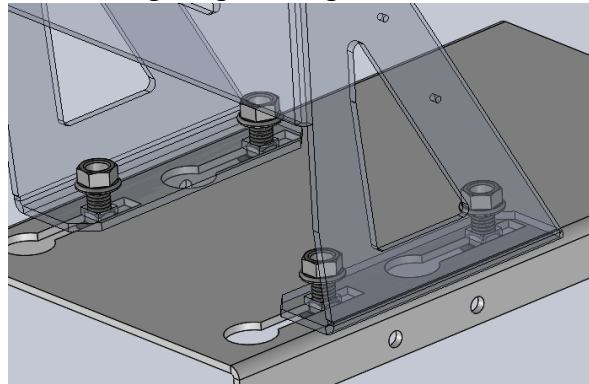
- 7.) Install floor plate on brackets installed in step 5, using eight provided ¼-20x0.5 screws. Tighten ¼-20 screws from steps 5 and 6 using 5/32 allen key, sixteen in total. Tighten all seat mount screws using 13mm socket, ten in total.



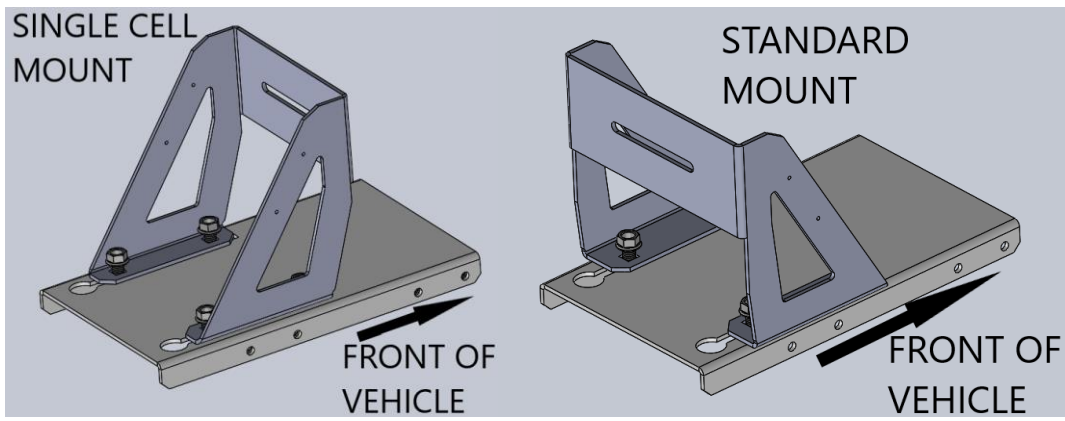
- 8.) If an electronics harness cover will be used, OEM or otherwise, set it in place at this stage. Leave the rear mounting screws loose.
- 9.) Insert four 3/8-16 carriage bolts with flange nuts, provided, into mount leg (#rleg for single cell, #recleg otherwise). Ensure round heads are on underside of leg.



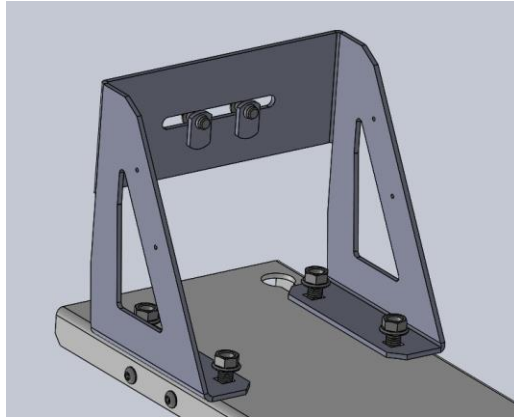
- 10.) Insert bolt heads into round cutouts in floor plate and slide screws forward to fix screws into place, ensuring square profiles of carriage bolts are aligned with slots in floor plate. Set nuts finger tight so leg does not move.



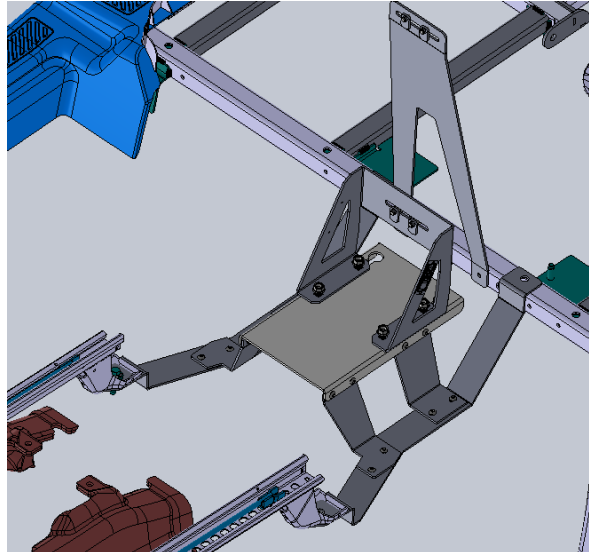
- a. Note that the orientation of the leg depends on your weapon mount configuration. The legs look similar, but they are different parts.



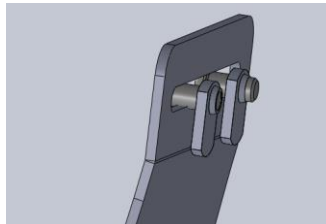
11.) Insert two 5/16-18x0.625 screws with flat nuts, provided, into mounting leg. Nuts are oriented toward front of vehicle regardless of configuration. Pictured configuration is standard.



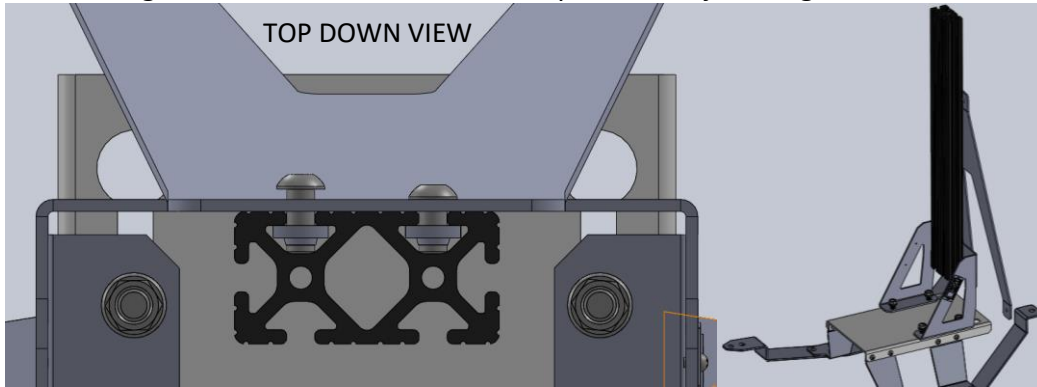
12.) Mount rear brace to subframe using OEM M6 hardware. Mounting locations are the same as the harness cover mounting locations. Brace angle is toward front of vehicle.



13.) Insert two 5/16-18 screws with flat nuts, provided, into rear brace, similar to placement in step 11. Nuts are oriented toward front of vehicle.

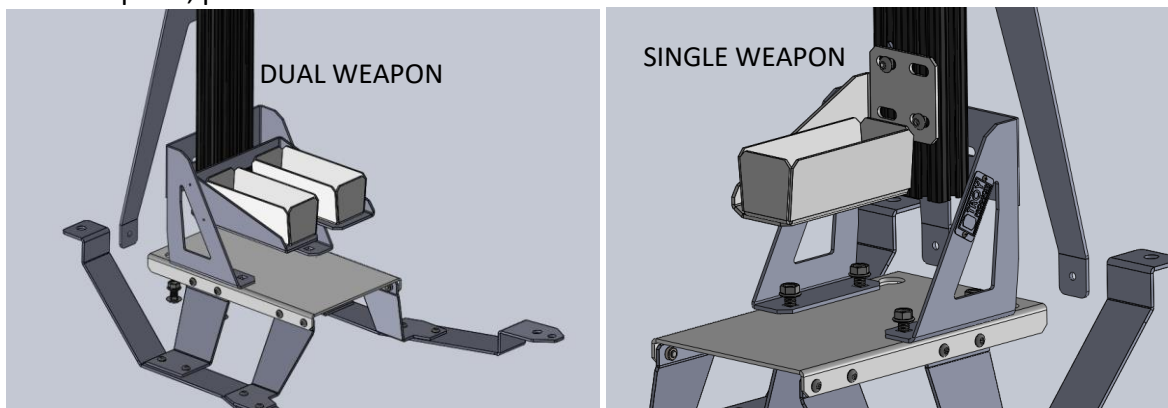


- 14.) Slide aluminum extrusion (47065T555) onto flat nuts, starting from rear brace and sliding downward. If harness cover is present, adjust height of extrusion as needed.

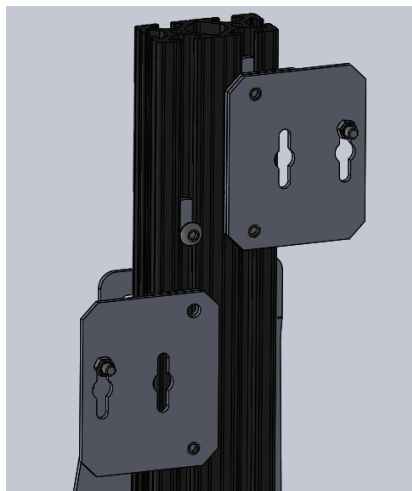


II.) Weapon Brackets:

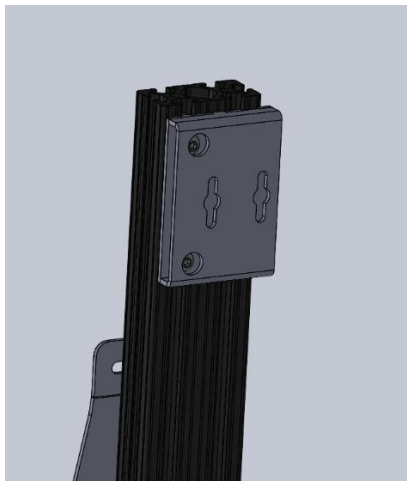
- 15.) Insert two 5/16-18x0.625 screws with flat nuts, provided, into butt plate mounting bracket (#bpb) and slide bracket onto aluminum extrusion as shown, mimicking previous installation of rear brace and bottom leg.
- If a single weapon configuration is to be used, the butt plate bracket part number will be #bpmnt, pictured in BOM.
- 16.) Install butt plate brackets loosely using two ¼-20x0.625 screws and nylon nuts for each butt plate, provided.



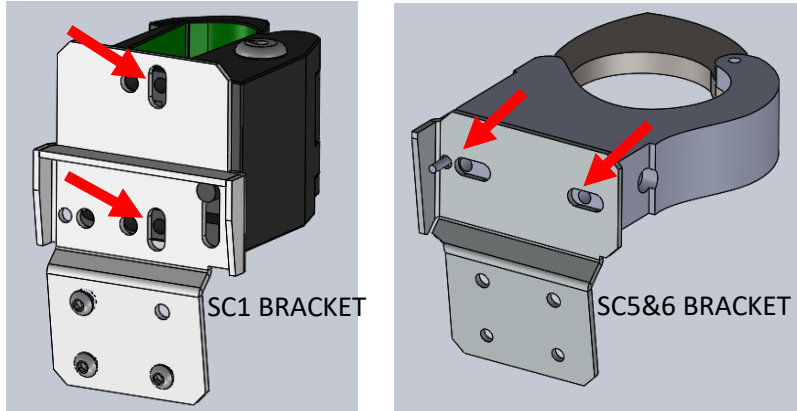
- 17.) Insert two 5/16-18x0.625 screws with flat nuts, provided, into each weapon bracket mount (four fastener pairs total). Slide mounts to appropriate height and gently tighten to hold in place.



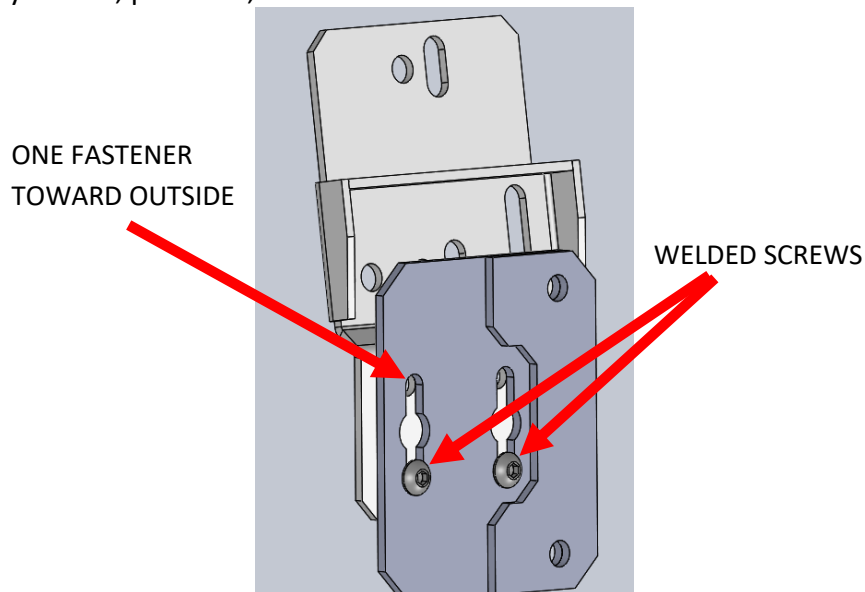
- If a single weapon setup is used, orient as shown.



18.) Mount gun locks to weapon brackets as shown using provided 5/16-18x0.625 screws.



19.) Insert weapon bracket into mounting plate. Each bracket has two screws welded in place. The heads of these screws are inserted into the slots on the bracket and moved downward to secure them. Fasten bracket to mount with one ¼-20x0.75 screw and nylon nut, provided, toward outside of bracket.



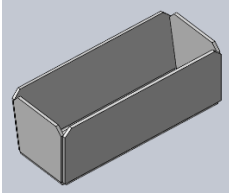
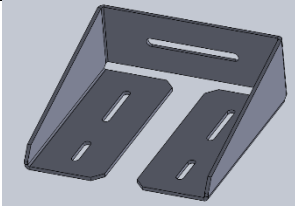
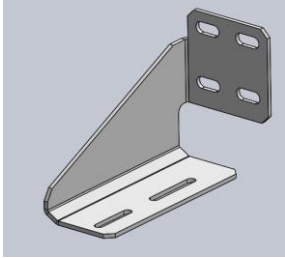
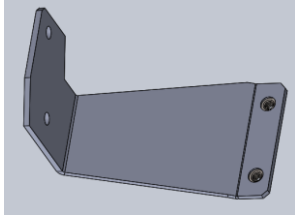
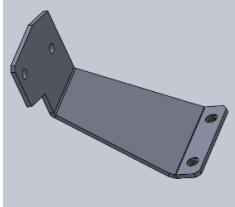
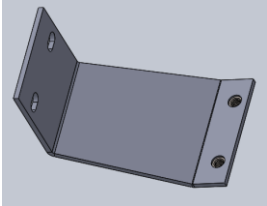
20.) Weapons or weapon models can be used at this point to approximate heights of bracket mounts, fore/aft location of butt plates, and butt plate bracket height. Tighten all screws.

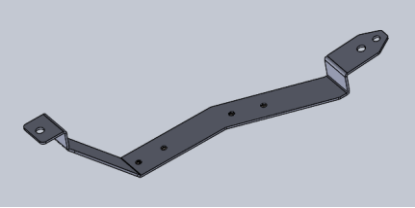
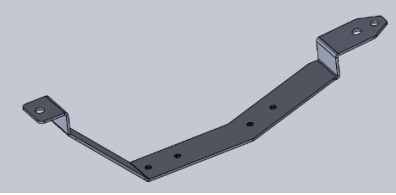
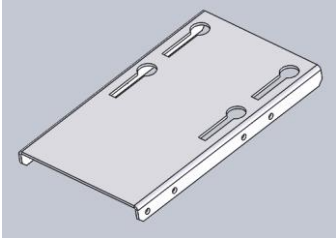
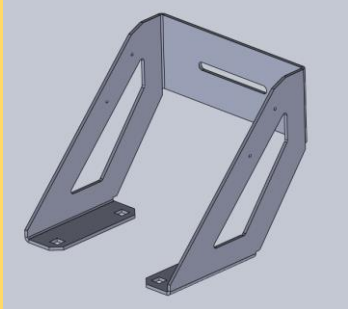
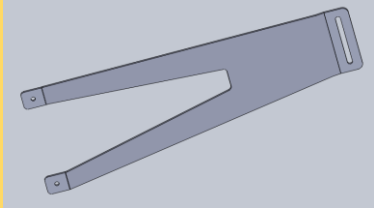

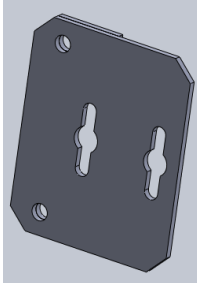
Your installation is now complete. If you have any questions or suggestions for adding additional instructions, please call **Customer Service at (800) 700-8769**.

GM-20UV-SGRF

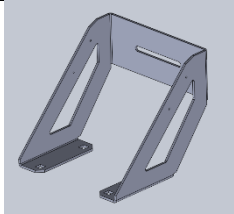
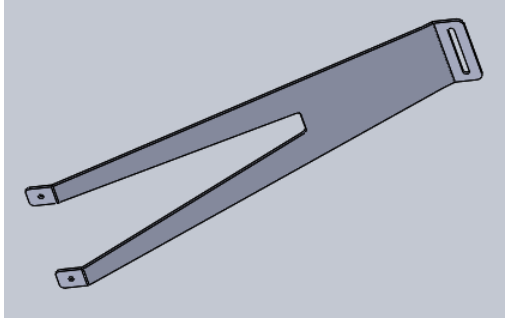
BILL OF MATERIALS

A. Parts - Note that parts marked in gold are not included in the single cell variant of the weapon mount. Additional parts included with the single cell mount are listed separately below.

Part #	Description	Qty.	Picture
GM-BP-XL	Butt Plate	1 OR 2	
GM-20UV-SGRF-#bpb	Butt Plate Bracket For Dual Weapon	1 With Dual Weapon Mount	
CM-20UV-SGL-#bpb	Butt Plate Bracket for Single Weapon	1 With Single Weapon Mount	
GM-20UV-SGRF-#db2	Front Driver Floor Bracket	1	
GM-20UV-SGRF-#pb2	Front Passenger Floor Bracket	1	
GM-20UV-SGRF-#b	Rear Floor Brackets	2	

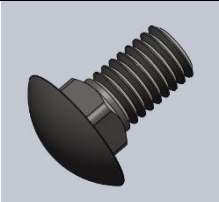
GM-20UV-SGRF-#pf	Passenger Foot	1	
GM-20UV-SGRF-#df	Driver Foot	1	
GM-20UV-SGRF-#flp	Floor Plate	1	
GM-20UV-SGRF-#rleg	Leg	1	
GM-20UV-SGRF-#brc	Rear Brace	1	
0-BAR-60-47065T599	Aluminum Extrusion	1	
GM-20UV-SGRF-#p	Bracket Mount	1 or 2	

Single Cell Configuration

GM-20UV-SGRF-SC-#rleg	Mounting Leg	1	
GM-20UV-SGRF-SC-#brc	Rear Brace, Single Cell Configuration	1	

B. Hardware

1-FST-06-60820	¼-20x0.5 BHCS	16	
1-FST-44-51618	5/16-18 flat nut	10	
1-FST-06-51658	5/16-18x0.625 BHCS	10	
1-FST-06-60825	¼-20 x 5/8" button head socket screw	2	
1-FST-35-31000	¼-20 nylon lock nut	2	

1-FST-15-11220	3/8-16x0.75 Carriage Bolt	4	
1-FST-41-61200	3/8-16 Flange Nut	4	