



# TROY PRODUCTS

## INSTALLATION INSTRUCTIONS

Jan 28, 2020  
Revision 0

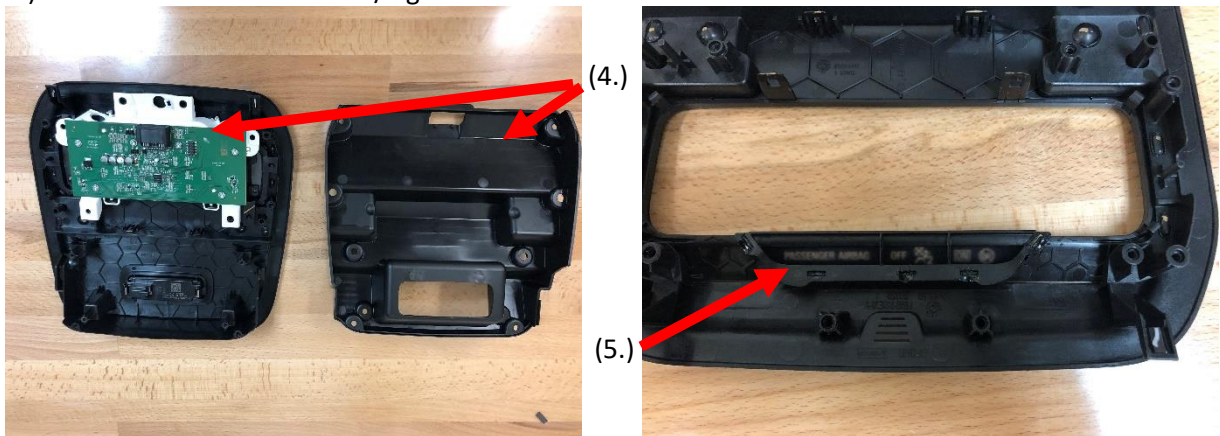
A division of Troy Sheet Metal Works, Inc.  
1024 South Vail Avenue, Montebello, CA 90640  
www.troyproducts.com 800 700-8769

Part No: CC-UV20-OH  
Description: Overhead Console

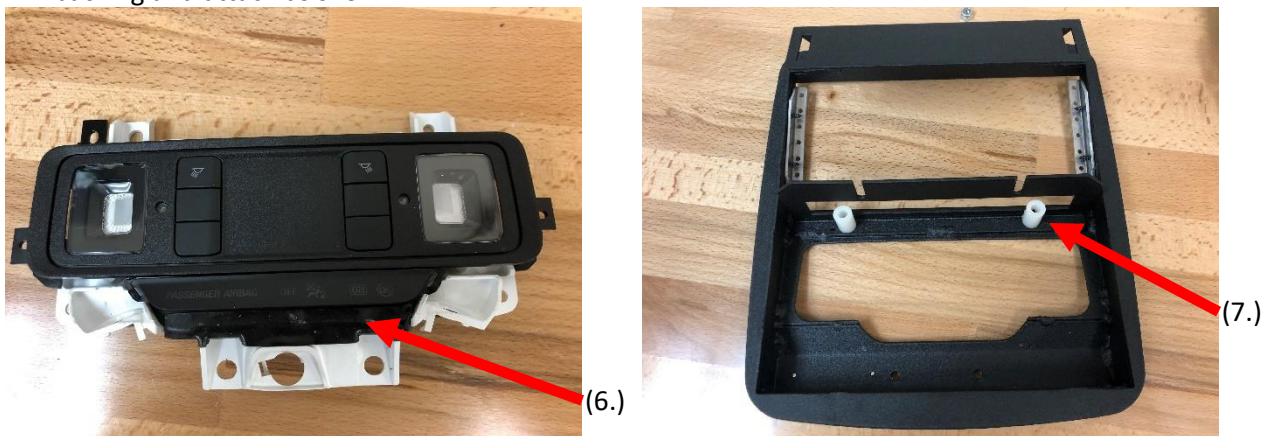
Vehicle: Ford P.I. UV  
Model year: 2020



- I.) **Remove O.E.M. console and remove PB/ light module:**
- 1.) Pull down and unsnap overhead console assembly from headliner.
  - 2.) Disconnect wire connectors.
  - 3.) Remove console assembly.
  - 4.) Remove back cover and PB/ light module from OEM console.



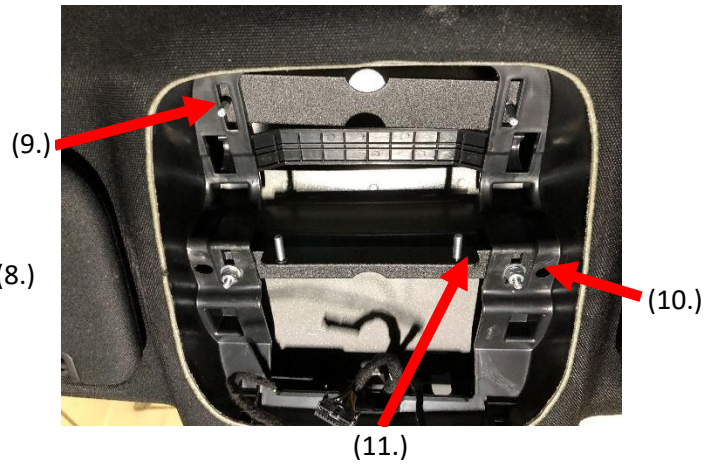
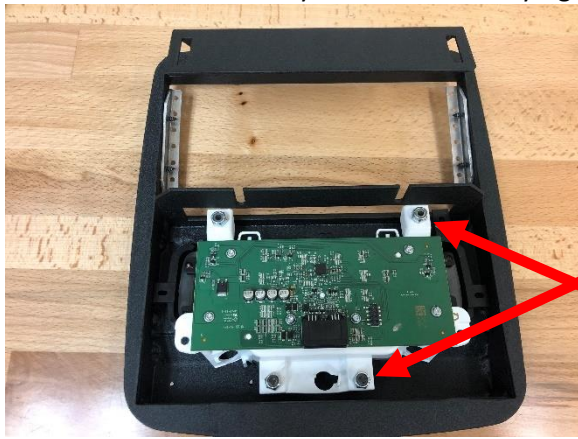
- 5.) Remove passenger airbag indicator lens from OEM housing by cutting plastic welds and carefully prying off.
- 6.) Attach airbag indicator lens to OEM PB/ light module using the provided adhesive tape. Peel off backing and attach as shown.



- 7.) Install (2) provided 5/16" ID x 3/4" long nylon spacers.

CC-UV20-OH

8.) Install OEM PB/ light module onto the Troy Products console and fasten using (4) provided #10-32 x 1.25" screws and nylon nuts. Carefully tighten but do not over-tighten.

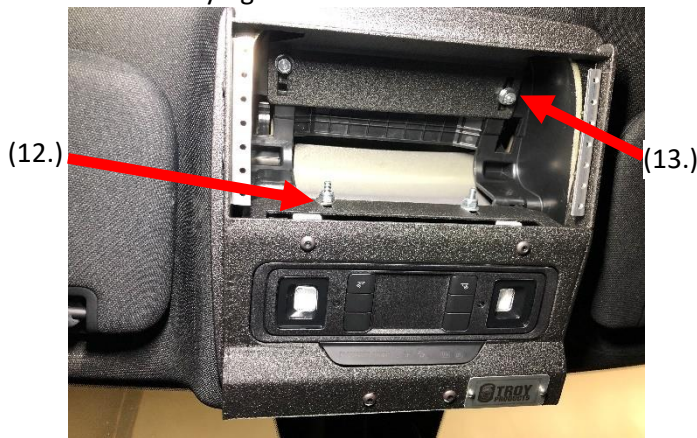


**II.) Install support plates:**

- 9.) Install rear support plate (studs down) on top of headliner plastic housing. The studs extend thru the slots.
- 10.) Install front support plate (2 studs down, 2 studs toward rear) on top of headliner plastic housing. The studs extend thru the slots. Fasten front support plate to the plastic using (2) supplied #10-32 nylon nuts and washers. Slightly tighten so this can be adjusted.
- 11.) Install (2) washers and #10-32 nylon nuts onto the rear facing studs. Do not tighten.

**III.) Install Troy Products overhead console:**

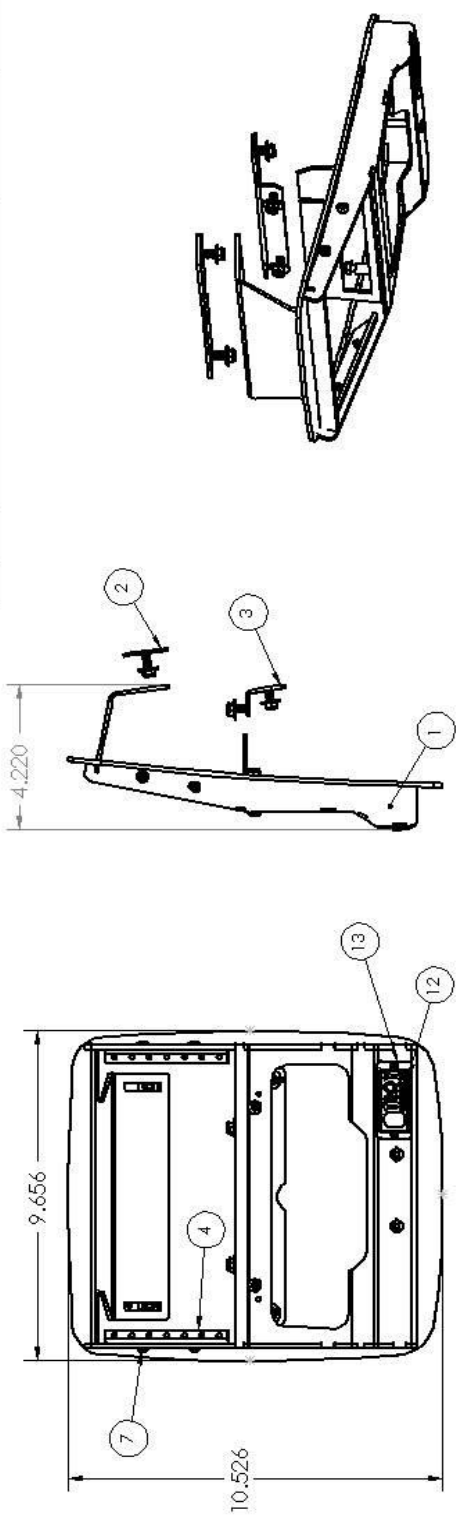
- 12.) Connect wire connector to PB/ light module. Install console into headliner opening. Insert console mounting tab slots in-between front support bracket and previously installed washers and nuts.
- 13.) Attach console to rear support bracket using (2) provided #10-32 nylon nuts and washers. Securely tighten all fasteners.



Your installation is now complete. If you have any questions or suggestions for adding additional instructions, please call **Customer Service at (800) 700-8769.**

8 7 6 5 4 3 2 1

REVISIONS				
ZONE	REV.	DESCRIPTION	DATE	APPROVED



ITEM NO.	PART NUMBER	DESCRIPTION	QTY.
1	CC-UV20-OH-#w	Console weldment	1
2	CC-UV20-OH-#psr	Rear install plate	1
3	CC-UV20-OH-#psf	Front install plate	1
4	AC-RAIL-4-UV20	4" face plate rail	2
5	1-SLT-40-11931	1/2" x 3.5" VHB 5952 black tape	1
6	1-FST-54-90020	#10 ID x 5/16"OD x .75" long bushing	2
7	1-FST-05-330305	#8 x 1/2" BH sec Torx screw	4
8	1-FST-06-65695	#10-32 x 1.25" BH socket screw	4
9	1-FST-35-31150	# 10-32 nylon nut	10
10	1-FST-50-10600	FLAT WASHER, Z1, #10	6
11	AC-TSSCR25	Torx screw kit w/ bit	1
12	3-PAK-1PLOGO	Troy logo plate	1
13	1-FST-02-91654A	#4 x 3/16 drive screw	2
14	3-PAK-131105	Box 13" x 11" x 5" 200# Test	1

UNLESS OTHERWISE SPECIFIED:  
 DIMENSIONS ARE IN INCHES  
 TOLERANCES:  
 FRACTIONS DECIMALS MILLI  
 ANGLES DECIMALS DEGREES  
 HOLE FACT DECIMALS .0005  
 HOLE FACT DECIMALS .0015

DATE: 1/10/20  
 DRAWN: PFM  
 CHECKED BY: MMB  
 INCHES: DECIMALS  
 MILLI: ANGLES: DEGREES  
 Q.A.  
 COMMENTS:

1024 South Val Avenue  
 Montebello, CA 90640-6020

2020 Ford UV  
 overhead console

SIZE: B  
 DWG. NO.: CC-UV20-OH

SCALE: 1:3  
 SHEET 1 OF 1

PROTECTED BY JAG CONFIDENTIAL  
 FOR FORD, FORD CREDIT AND THE  
 FORD MOTOR COMPANY. ALL RIGHTS  
 RESERVED. © 2019 FORD MOTOR CO. ALL  
 INFORMATION IS UNCLASSIFIED  
 EXCEPT WHERE SHOWN OTHERWISE  
 BY FORD MOTOR COMPANY

**CC-UV20-OH  
BILL OF MATERIALS**

PART#	DESCRIPTION	QTY.	PHOTO
CC-UV20-OH#w	Overhead Console	1	
CC-UV20-OH-#psr	Rear Install Plate	1	
CC-UV20-OH-#psf	Front Install Plate	1	
1-SLT-40-11931	1 / 2" X 3.5" VHB 5952 Blk. Tape	1	
1-FST-54-90020	#10 ID X 5/16" OD X 3 / 4" Long Nylon Spacer	2	
1-FST-35-31150	10-32 Nylon Nut	10	
1-FST-50-10600	#10 Flat Washer, ZI	6	